

# Faith Center Outreach



## A MESSAGE FROM PASTOR SCHOCH

Dear Friend,

The tremendous privilege and responsibility to do the will of God—not many good works in His name—but doing the will of God gains for us an entrance into the Kingdom of Heaven (Matthew 7:21).

The will of God commanded by Jesus as the last call to supper (Luke 14:23) and being unique for our generation.

Go out into the Highways—and compel them to come in. Certainly this could not mean go into today's Freeways (except radio).

In the original Greek—"highway" is method or means. There are seven "highways" that are related only to our generation or the end time.

They are High Voltage—today as in no other we talk of billions of volts.

High energy—generators—rockets that go to the moon.

High Power—Atomic power—man's greatest force.

High Fidelity—pure sound reproduction and transmission.

High Frequency—FM and UHF Radio and Ultra High Frequency.

High Speed—Jesus preached and sound traveled at 700 MPH. Radio and TV we speak at 186,000 miles per second.

High Orbit—Stationary satellite 23,000 miles above the earth, sending messages back to every corner of the earth.

These tools were created by God and discovered by man that God through us may do in our day a quick work on the earth.

Go out into the highways and compel them to come in.

More than fifty per cent of what we do is motivated by what we have seen and heard combined.

This makes television the greatest compelling force. The church is commanded by these "high-ways" to compel them to come in.

This brochure extends the privilege for you to be a part of the will of God for the last Call to Supper.

Cordially in Christ,

*Pastor Ray Schoch*

Pastor Ray Schoch





## FROM A SMALL STREAM A MIGHTY RIVER FLOWS



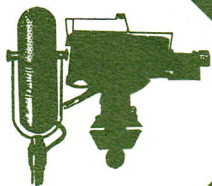
FAITH CENTER stands today as a miracle-monument to God's faithfulness and blessing. Its humble beginning twenty-four years ago was like a small stream from which a mighty river now flows to bless the world. Every mighty river has a center or source; all the warmth of the earth has its center or source, so effective world-wide ministries find a throbbing source at FAITH CENTER.

Continually reaching out in ever-increasing scope, God has blessed this ministry . . . first to the community and then to the world.



FAITH CENTER is the result of the vision of its spiritual leader, Rev. Raymond Schoch . While it houses a congregation it has exceedingly broader dimensions . . . it is the headquarters for a thrillingly effective outreach . . . serving well, and not limited to its own four walls . . . scriptural precepts spread by 20th Century methods.

FAITH CENTER's combined outreach encompasses some two hundred million needy each day!



## REACHING OUT THROUGH SIGHT AND SOUND



### KING'S HERALD OF FAITH

...holds a special meaning to tens of thousands of Southern Californians, for it is the oft-repeated phrase that is amplified and transmitted over the airwaves from KHOF-FM, the largest commercial FM station in Southern California. From its powerful 100,000-watt voice at FAITH CENTER, the Gospel in Word and song emanates around-the-clock, twenty-four hours of every day of the year!

Its vast variety of programming provides inspiration, instruction and entertainment to a potential listening audience of twelve million Southlanders. It is the source of spiritual uplift for the shut-in, the companion of the lonely, the builder of the faith and clarion of the message of Salvation for the lost.

*"So then faith cometh by hearing, and hearing by the Word of God." Romans 10:17*





5,200 feet above the Los Angeles basin with 1¼ million watts of color power stands KHOF-TV, one of the nation's highest TV installations. As height is equal to power this gives the Gospel a mighty arm wherewith to reach a potential of twelve million people.

From its production studios in Glendale, California, KHOF-TV's programs are created for the East Coast, the Southern States and now for Foreign fields. A mighty long arm!

More than fifty percent of all we do is motivated by the combination of seeing and hearing. Television plus the Holy Spirit gives us the greatest compelling force on earth!

Thousands of people find deep satisfaction in knowing that to support FAITH CENTER is to be a part of the first church in the United States to own and operate its own TV station.





## REACHING OUT TO THE WHOLE WORLD

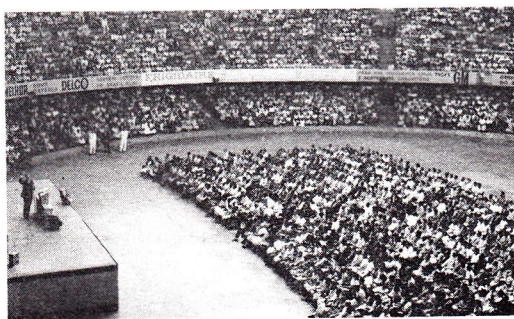
"Go ye into all the world" is a command that FAITH CENTER has faithfully heeded. To all the world they have gone, and when they could not go, they have sent! Giving liberally, FAITH CENTER supports wholly or in part twenty missionaries around the world.

"Our neighbor to the south," Mexico, has its first Christian radio station as a FAITH CENTER outreach. Dale Smith, former KHOF-FM manager, has launched XHMM-FM in Mexico City, broadcasting fifteen hours daily to a potential audience of six and a half million souls.

In Rio de Janeiro, Brazil, another three-station outlet reaches a potential of three and a half million with the Gospel in the Portuguese tongue. Via short-wave the programs are also beamed to Portugal on the Continent of Europe. A recent Crusade in connection with the station attracted a crowd of over 12,000. Missionary Bob McAlister serves there.

Several names are important in FAITH CENTER's world outreach. One of them is **Willard Cantelon**. For over thirty years he has been an ambassador of evangelism throughout the world. His ministry of the Word, his oil paintings, and his motion pictures have won thousands to Jesus Christ.

His close association with FAITH CENTER and his "Outreach Unlimited" programs on KHOF radio and TV have proved a blessing to many. He is responsible for six FILM ROVER vans traveling throughout Europe showing films with Gospel impact. A city square, recreation





park or some populated area becomes the "sanctuary" for the presentation of the Gospel. A film is shown, gospel portions are distributed, and seekers counseled.



**Willard Cantelon**



**Paul Finkenbinder**



**Rev. David DuPlessis**

**Paul Finkenbinder**, known affectionately throughout South America as "Hermano Pablo," is heard on radio over 230 times daily in all twenty-three Spanish-speaking countries (including Spain and Cuba). According to Hermano Pablo, every Spanish-speaking country of the world gets the Gospel every day!

Through the dream of Paul Finkenbinder and the outreach of FAITH CENTER, LARE (Latin American Radio Evangelism) is expanding its missionary program to include five-minute daily television releases. Originally the LARE ministry included five-minute radio programs, revival crusades in strategic Latin American centers and follow-up correspondence courses with the converts. Now the challenge of TV is a reality in Peru and Equador, and FAITH CENTER shares in this outreach!

The unique ministry to many denominations of another associate in FAITH CENTER's world outreach, is the **Rev. David DuPlessis**. Lovingly known all over the world as "Mr. Pentecost," Dr. DuPlessis has a highly influential ministry reaching vast circles everywhere! He is a member and effective arm of FAITH CENTER's far-flung ministry.

His many radio and television programs through KHOF-FM and TV bless the millions of Southern Californians.



## REACHING OUT TO OUR COMMUNITY

A VISION FOR THE WHOLE WORLD does not neglect the spiritual well-being of one individual! FAITH CENTER's congregation worships and works in sanctuary and Sunday School . . . it's a family church . . . a place to worship and grow. Spirit-filled teachers and leaders serve with anointed consecration.

FAITH CENTER HAS A SINGING HEART! It offers a musical outlet for dedicated musicians. Under the direction of **Rev. James Boresma** the choirs, choral groups, hand-bell choirs and orchestra contribute to the worship and inspiration of the services.

FAITH CENTER'S CHRISTIAN DAY SCHOOL puts into practice the precept that high academic standards are enhanced with Christian emphasis. With the national average of 6 2/3 hours before the television set each day, it is imperative to expose our children to a full day of Spiritual atmosphere. This excellent Christian day school fulfills that great need, offering classes from preschool through the sixth grade.



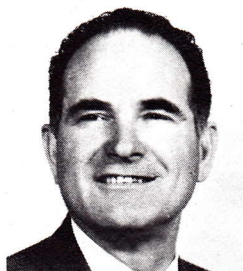
THE SCHOOL OF THE LIVING WORD serves the entire community three times daily by teaching Bible truths and explaining the mysteries of the Gospel. Available to all through the medium of FM radio and TV, God's Word is being brought TO the student, thus enabling many who would not otherwise have such an opportunity to effectively study the Bible.



**Dr. Willard C. Peirce** has a lifetime background in Christian Education. With academic degrees and vast experience in founding and teaching in several major Christian colleges, he utilizes these qualifications effectively with microphone and telephone.



**Dr. Willard C. Peirce**



**Dean W. Berger**

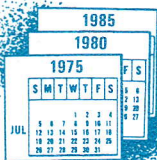
**CHRISTIAN COUNSELING CLINIC MINISTRY . . . Dean W. Berger** is a highly qualified and experienced licensed counselor. His counseling ministry serves one of the greatest home missionary needs of today. He is available at FAITH CENTER for personal, marriage, family and child counseling. Combining the insight therapies of psychology with time-honored, faith-centered Spirit-filled counsel, he has helped individuals and families throughout this area to become more effective in their daily living.

Dean Berger speaks daily on the KHOF Harmony Home Hour, extending the scope of his spiritual influence into countless homes.

**SA-HA-LE IS AN EXCITING FAMILY CAMP** high in the mountains above San Bernardino, by Big Bear Lake. It is operated year 'round as part of the total ministry of FAITH CENTER. The summer highlight is reached when the family joins for a week of spiritual growth, fellowship, good food, and smog-free fresh mountain air.

As Jesus was transfigured when He took His disciples to an exceedingly high mountain apart, so the lives of those attending Sa-Ha-Le Camp are transformed by this unique spiritual experience.





# REACHING OUT TO THE FUTURE

We must plan to "occupy until He comes." Many new outreaches await our step of Faith! With a community of over twelve million people, and a world with four billion, the challenge and responsibility rests heavily upon us.

In the face of ever-increasing need, there must be an ever-expanding effort.

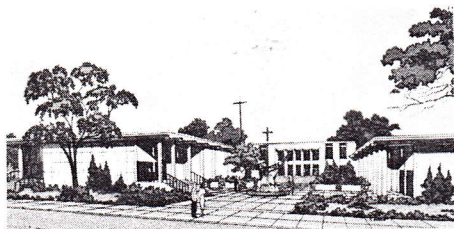
In order to efficiently serve the congregation of FAITH CENTER, a new sanctuary will be essential. The television station needs additional studios and equipment.

A RETIREMENT CENTER AND CONVALESCENT HOSPITAL is a future plan, a future outreach for FAITH CENTER.

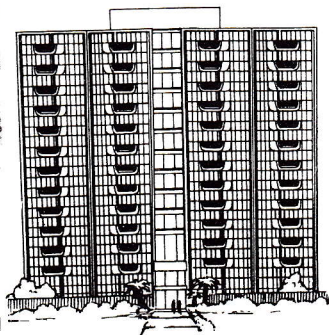
We propose to erect a complex of high-rise facilities designed to lighten the load of the aged and ill who look to us for physical as well as spiritual ministrations. It will be conveniently located to make easy access to FAITH CENTER's services.

We must plan now, and prepare for construction, for the need becomes more pressing as time passes.

THESE THINGS, AND MANY MORE AS THE LORD LEADS, ARE FAITH CENTER'S FUTURE OUTREACHES. WE ARE WILLING TO TAKE THE STEPS WHEN HE DIRECTS.



Expansion of Faith Center to include New Sanctuary



Retirement Center and Convalescent Hospital





FAITH CENTER

1615 SOUTH GLENDALE AVENUE, GLENDALE, CALIFORNIA 91205